

# 'Church Walk Studios'

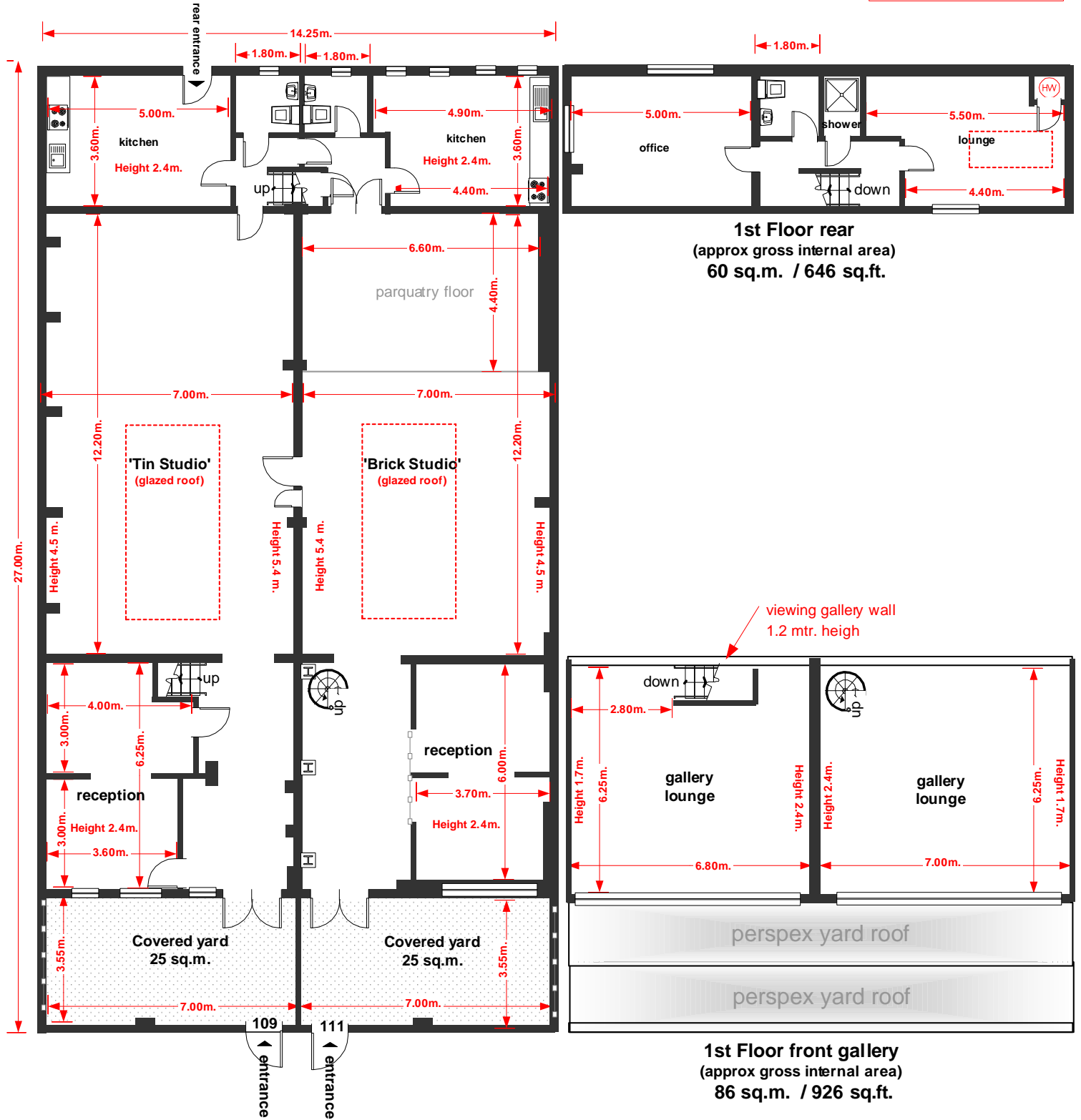
109 / 111 Church Walk  
London N16 8QW



## FLOOR PLAN

(approx gross internal area)  
454 sq.m. / 4886 sq.ft.  
+ Front yards 50 sq.m. / 538 sq.ft.

**\* NOTE**  
This plan, whilst to scale,  
**is for guidance only**  
contractors must verify all  
dimensions on site.



Scale: Metric 1 : 150 @ A4  
\* for .pdf conversion scale off rule below

